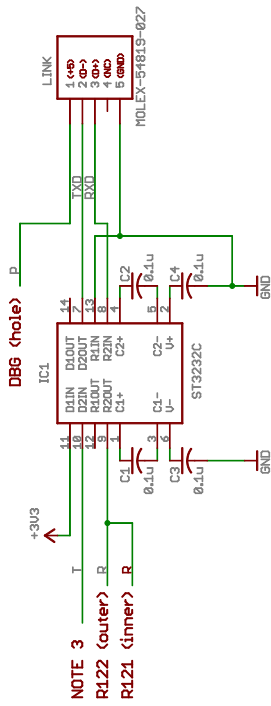
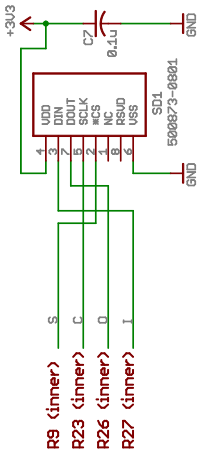


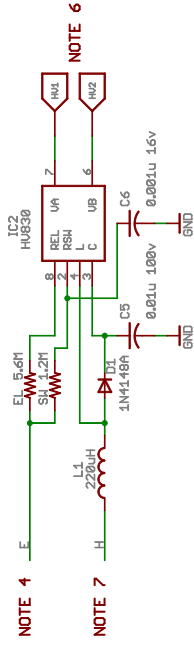
3/5 WIRE RS232 I/FACE



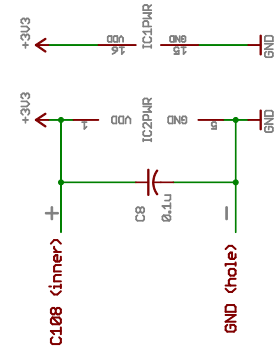
minisd CARD SOCKET



EL BACKLIGHT SUPPLY



- Wiring notes:**
 wire length in millimeters, clockwise from P to E:
 60, 110, 110, 100, 100, 100, 100, 100, 25, 50, 15, 15
- NOTES**
1. "outer" refers to the lead (pad) nearest (towards) edge of PCB.
 2. "inner" refers to the lead (pad) towards the XY center of the PCB.
 3. attach to feed thru hole nearest the large GOLD "dot" close to R53
 4. E goes to RP4 (inner) on pin nearest R108, -OR-, tie E to GND to disable EL supply.
 5. The HU pins have about 100 volts on them.
 6. H goes to cathode of CR14 (large end), this is input of 3.3v regulator. Input to the EL supply is taken from raw battery / adaptor voltage.



ZipIt Multi Board

TITLE: ZipItMultiBoard-revX

Document Number:
(C) 2006 - WIN3L

REU:
F

Date: 5/16/2007 14:50:36

Sheet: 1/1